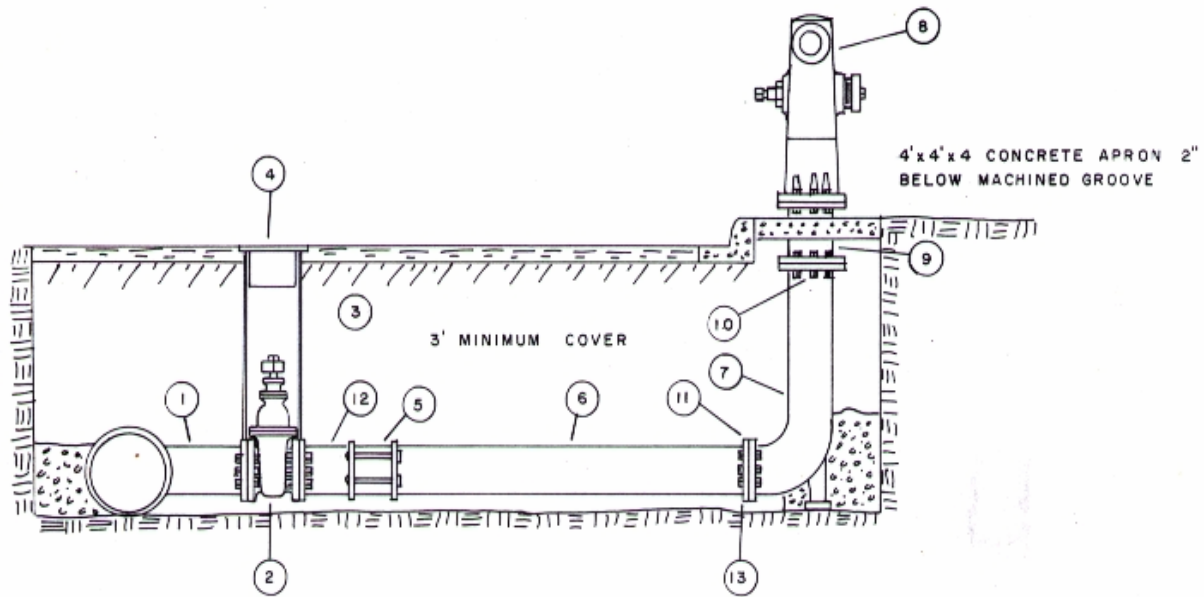


# NORTH COUNTY FIRE PROTECTION DISTRICT Hydrant Installation Standards

**INSTRUCTIONS:** Refer to the diagram below for drip cap installation standards. Contact the appropriate water provider for detailed installation standards.



1	2	6" FLANGED SADDLE
2	1	6" GATE VALVE
3	1	8" 16 GAGE C.M.P.
4	1	8" CAST IRON VALVE BOX CAP STAMPED "WATER"
5	1	6" DRESSER COUPLING STYLE 38 STANDARD
6	1	6" x REQUIRED LENGTH OF C.M.L. & C. PIPE W/ FLANGE
7	1	6" x 30" FLANGED BURY ELL
8	1	4" x 2 1/2" JONES NO. 3700
9	1	6" BREAKOFF EXTENSION, LENGTH AS REQUIRED
10	36	NUTS & BOLTS
11	5	6" RING GASKETS
12	1	6" FLANGED NIPPLE
13	3	6" WELDING FLANGE